

Opportunities For Ministry 2009-2010



Paoli Presbyterian Church
225 South Valley Road
Paoli, PA 19301
610-644-8250
www.paolipres.org

Contents

Ministry	Page
Introduction	2
Caring Ministries	4
Christian Nurture-Adult Ministries	6
Christian Nurture-Children's Ministries	7
Christian Nurture-Men's Ministries	9
Christian Nurture-Women's Ministries	10
Christian Nurture-Youth Ministries	12
Fellowship Ministries	14
Mission and Outreach Ministries	16
Property Ministries	20
Support Services Ministries	21
Stewardship and Finance Ministries	23
Worship and Music Ministries	24
Miscellaneous Ministries	29
Spiritual Gifts	30

Ministry Opportunities...

Within the pages of this booklet are dozens of ways we can serve others by using the unique gifts with which God has blessed each of us.

Please prayerfully consider how you will participate in fellowship and ministry during the next year. Review the multitude of opportunities detailed in the following pages. Each one explains the ministry, gives the time commitment, and identifies the spiritual gifts that ministry needs.

Find one or two ministries that use your gifts and in which you can serve. Then as a good steward make your commitment in worship on September 20 to serve God faithfully in those ministries for the next twelve months. If you are not in worship on September 20, please obtain a commitment form at the Welcome Center, complete it and return it to the church office.

Thank you!

Equipping Ministry Leadership Team

Caring Ministries

By this all will know that you are my disciples, if you have love for one another. John 13:35

Ministry	Description of Service	Time Commitment	Gifts/Skills/Interests
Bereavement Team	Share God's love with those experiencing grief because of the loss of a loved one.	2-3 hours/month	Caring, mercy, serving, listening
Communion Set-up/Clean up	Set up and clean up the communion elements and vessels for the 7:30, 9:00, and 11:00 worship services	2 hours Saturday and Sunday, first in the month and special services	Helping, serving, caring
Care Team	Share God's love with those hospitalized or experiencing illness or crisis by phone, a visit, or card	15 minutes-2 hours/month	Listening, caring, encouraging, Sharing faith
Extended Communion Team	Serve Communion to those unable to attend church service	2-4 hours/month	Caring, serving Ordained Elders and Deacons
Flower Delivery Team	Deliver church flowers to shut-ins following 11:00 a.m. service; Recipients are assigned.	One hour for two deliveries; Sunday, or Monday	Friendship, caring
Funeral Reception Team	Share God's love with the family and friends of the deceased by providing a reception after a funeral or memorial service	2-4 hours when they occur	Caring, helping, serving, hospitality

Caring Ministries (continued)

Ministry	Description of Service	Time Commitment	Gifts/Skills/Interests
Lovin' from the Oven Team	Provide home-cooked meals and/or desserts to all those in need; support any person or team who knows of a need and would like to deliver a meal.	2-4 meals/desserts/year	Hospitality, cooking, giving
Music Outreach Team	Share the gift of music with those in nursing homes, retirement communities, assisted-living facilities	2 hours every 2-3 months	Love of singing, caring
Nursing Home and Homebound Care Team	Share God's love with those in nursing homes and the home-bound members of our community	2 hours/month	Caring, serving, encouraging
Post High School Outreach Ministry Team	Provide care packages and cards to college students from our church	2-3 hours, spring/fall	Caring, organization, friendship
Stephen Ministry Team	One-on-one support of people with special needs	Extensive training provided; Actual ministry needs are varied	Listening, encouraging, patience; confidential matters

Christian Nurture-Adult Ministries

Study to show yourself approved before God, a worker who does not need to be ashamed, rightly dividing the word of truth. II Timothy 2:15

Ministry	Description of Service	Time Commitment	Gifts/Skills/Interests
Adult Class Leader Team	Lead a Sunday School class for adults	6 hours/month	Teaching, leadership Public speaking Bible knowledge
Adult Education Ministry Team	Assist in Adult Education Ministry	Variable as you are able	Helping hand
Library Team	Help maintain our Gould Library; Order, catalogue, maintain the collection	Variable as you are able	Love of books; library experience , helpful– not necessary
Small Group Leader	Leader of small groups	Training and group time	Leadership, hospitality Bible knowledge
Small Group Host/Hostess	Host small groups in home Or at PPC	1-1/2 hr. per meeting	Hospitality

Christian Nurture- Children's Ministries

Train up a child in the way he should go and when he is old he will not depart from it. Proverbs 22:6

Ministry	Description of Service	Time Commitment	Gifts/Skills/Interests
Advent Family Fun Day Team	Help all ages to celebrate Christ-mas by assisting with an advent craft; set up; clean up	2 hours planning/preparation; 2 hours on Nov. 29, 2009	Leadership, craft coordinator, craft monitor, music, food, set-up/clean-up. Joy in the season!
Child Care Team	Help care for young children in the nursery during the services and at other events throughout the year	1-2 hours on Sunday & Wed. or as needed	Love of children
Easter Egg Hunt Planning Team	Plan and carry out annual egg hunt, the Saturday morning before Easter	1 hour planning, 2 1/2 hours on the day	Hospitality, joy, faithfulness, music, fellowship, literature, leadership, organization, storytelling
Sunday School Teacher	Team teach children ages 2 through 5th grade	1-1/2 hours/week on Sunday plus preparation	Teaching, creativity, disciples who have been church members for 6 months and agree to abide by the child safety policy are invited to participate.

Christian Nurture- Children's Ministries (continued)

Ministry	Description of Service	Time Commitment	Gifts/Skills/Interests
Sunday School Substitute Teacher	Team teach a children's Sunday School class periodically as needed	As needed; 1-2 times/year	Teaching, creativity; disciples who have been church members for 6 months and agree to abide by the child safety policy are invited to participate.
Teacher Appreciation Luncheon Team	Plan and carry out the annual catered teacher	Once a year, in May; 2-3 hours preparation; 2 hours on the day	Hospitality, creativity
Vacation Bible School Team	Teaching, shepherding; help in crafts, games, music, snacks, artists, painters, room decorators.	July 12-16, 2010; time as available; Up to 3-4 hours planning and preparation; up to 4 hours each day	Creativity, organization, planning, teaching, crafts, decorating, music
Worship Bag Team	Plan, help prepare, fill, collect worship bags for children to have during the worship services.	10 minutes to 2 hours weekly	Organization, creativity, helpfulness

Christian Nurture-Men's Ministries

Ministry	Description of Service	Time Commitment	Gifts/Skills/Interests
Men's Bible Study	Participate in Men's Bible Study and Prayer Group	1 hour, 6:45 – 7:45 p.m. Thursday	Grow in Biblical knowledge
Men's Breakfast	Participate in breakfast preparation topics and speakers	6:15am Sept.-May	Fellowship; hospitality, Ideas

Christian Nurture-Women's Ministries

"Do not be conformed to this world, but be transformed by the renewing of your minds, so that you may discern what is the will of God-what is good and acceptable and perfect." Romans 12:2

Ministry	Description of Service	Time Commitment	Gifts/Skills/Interests
Broaden Your Horizons Ministry Team	Plan instructional programs for women; publicize event	5-10 hours December and January; alternate years (2010)	Plan, recruit presenters; publicity
Deborah Circle	Monthly study and service	September-June First Thursday, 9:30am	Fellowship, hospitality
Evening of Comfort and Joy Ministry Team	Plan menu and program for women to rest and enjoy the Christmas Season	5-10 hours November, December	Planning, artistic skills, publicity
Fun, Food , and Fellowship Ministry Team	Plan, program and menu for a relaxing evening out for women; theme, decorations, publicity	5-10 hours, September and Oct	Planning, artistic skills, publicity
Sweetheart Dinner Ministry Team	Plan and implement Sweetheart Dinner for interested couples; publicity	5-10 hours January and February	Planning, artistic skills, Cooking, publicity

Christian Nurture-Women's Ministries (continued)

Ministry	Description of Service	Time Commitment	Gifts/Skills/ Interests
Women's Bible Study Monday Evening	Small group; seek to know Christ through learning and prayer	2nd and 4th Mondays: September-May: 7-9pm	Hospitality, encouragement, serving
Women's Bible Study Tuesday Morning	Fellowship seeking to know Christ through learning and prayer	Every Tuesday 9-11:30; September-May; also summer schedule; child care provided	Hospitality, encouragement, serving, music
Women's Ministry Planning Team	Organize and facilitate the special events and standing programs which comprise Women's Ministry at PPC	1-2 hours monthly	Organization, financial planning, creativity, communication

Christian Nurture-Youth Ministries

“Don’t let anyone look down on you because you are young, but set an example for the believers in speech, in life, in love, in faith and in purity.” 1 Timothy 4:12

Ministry	Description of Service	Time Commitment	Gifts/Skills/Interests
Café 41	Help set-up and clean up fellowship coffee house every Sunday	4 hours per month	Gift of hospitality
Drama Ministry Team	Inspire and teach people of all ages through the art of acting, in programs, and in worship	4-6 hours per month	Acting, art
Inner City Serving Team	Work with an after-school program in Chester	3-15 hours a month, depending on commitment	Serving, helping
Junior High Ministry Team	Building relationships with every young person in this age group through teaching, prayer, games, and service	2 hours per week	A visible faith, teaching, energetic and patient
Senior High Ministry Team	Impacting lives through Bible study, prayer, and taking an interest in each teen and their growing faith	3 hours per week	A visible faith, enjoy teenagers, teaching

Christian Nurture-Youth Ministries (continued)

Ministry	Description of Service	Time Commitment	Gifts/Skills/Interests
Sunday Evening Youth Group	Help facilitate games and lead spiritual discussions	8 hours a month	Love for teenagers
Sunday Morning Bible Study	Creatively teach Bible Study to teenagers	4-6 hours a month	Passion for God's word
Wednesday Night Worship	Contemporary worship experience	1 hour/week	Passion for worshipping God through music
Youth Leadership Team	Must be a confirmation teacher, Sunday School teacher, or Sunday night leader		Desire to strengthen their leadership; enjoys teams

Fellowship Ministries

‘For where two or three are gathered in my name, I am there among them.’ Matthew 18:20

Ministry	Description of Service	Time Commitment	Gifts/Skills/Interests
Bowling Night Planning Team	Help organize a fellowship evening at a local bowling alley	3 hours	Hospitality
Church Picnic Planning Team	Help to set up, clean up, lead recreation at an all church picnic held at the church	1-3 hours	Hospitality; organization
Church Golf Outing Planning Team	Help organize an all church golf outing		Hospitality; organization
Greeters 9:00 Worship	Greet worshippers	8:45-9:00 am on Sundays	Hospitality
Greeters 11:00 Worship	Greet worshippers	10:45-11:00 am on Sundays	Hospitality
Homecoming Planning Team	Plan Homecoming celebration for September	5 hours during July/August	Helping, caring, creativity

Fellowship Ministries (continued)

Ministry	Description of Service	Time Commitment	Gifts/Skills/Interests
New Member Team	Help with seminars welcoming new members to include food preparation, picture-taking, greeting, compile new member packets	2 seminars; two, two-hour seminars each.	Hospitality
Pancake Breakfasts Planning Team	Help plan and carry out congregational Pancake Breakfasts; plan, buy and cook food, serve, clean up	3-8 hours, 2 times/yr.	Hospitality, serving, helping, cooking
Refreshment Set up	set up refreshments	30 minutes before 9 am or 11:00 am worship service	Hospitality
Refreshment Clean up	Clean up refreshment tables following 11 am service	30 minutes	Hospitality

Fellowship Ministries (continued)

Ministry	Description of Service	Time Commitment	Gifts/Skills/Interests
Special Events Team	Plan, buy, set up for special fellowship events	2 hours plus event	Hospitality
Welcome Desk	Greet guests, answer questions, escort guests as needed	20-30 minutes before, after, and between worship services	Hospitality

Mission/Outreach Ministries

"You will receive power when the Holy Spirit has come upon you; you will be my witnesses in Jerusalem, in all Judea and Samaria, and to the ends of the earth." Acts 1:8

Ministry	Description of Service	Time Commitment	Gifts/Skills/Interests
City Team Ministry Team	Serve evening meal and lead a chapel service for people who are hungry.	3 hours; 2nd Friday of each month	Hospitality, Mercy
Cornerstone Christian Academy Support Team	Spend time at Cornerstone working in computer lab, providing other support to teaching staff, tutoring assistance to students	As scheduled; one morning per week; one morning per month; special projects	Teaching, computer skills, reading and math tutoring, working with elementary and middle school students

Mission/Outreach Ministries (continued)

Ministry	Description of Service	Time Commitment	Gifts/Skills/Interests
Food Closet Team	Food for less fortunate families in the community; monthly and Easter, Thanksgiving and Christmas	1-10 hours per month	Sorting, packing food in boxes and distributing food; mercy
Furniture Task Force Team	Provide good used furniture for needy persons in the community	3 hours/month pick up furniture Weds; Or 2 hours/month on Saturday mornings	Ability to lift; mercy
Home of the Sparrow Revive a Room	Support painting/redecorating of room for family residing at PA Home of the Sparrow in West Chester.	One time commitment 4-8 hours over one weekend, or a few weeks at the designated time of the project	Hospitality, home improvement skills, painting, decorating
Methodist Midtown Parish	Host a child from Philadelphia in your home during the week of Vacation Bible School July 12-16, 2010	Sunday afternoon to Friday lunch time	Share your family routine and Christian love with a child; bring him/her to Bible School
Mission House Support Team	Prepare house for missionaries; support missionaries living there	2-4 hours per month	Hospitality, mission

Mission/Outreach Ministries (continued)

Ministry	Description of Service	Time Commitment	Gifts/Skills/Interests
Missionary Care Team	Provide care for missionaries through prayers and correspondence; interpret work of missionaries to congregation	2-4 x's per yr. as needed	Caring, hospitality, interest in foreign cultures, communication skills
Presbyterian Children's Village Team	Wrapping Christmas gifts, delivering collected gifts, other projects throughout the year.	1-2 hours several times/year	Helping
Stamp Ministry	Trim and sort stamps which are donated to a ministry which provided Sunday School material to children in Latin America	10-20- minutes/week	Fellowship, helping
Toy Shop	Provide toys for needy children	1-3 hours/month	Hospitality, organization skills
Winter Wonders Dinner Team	Plan, purchase and prepare dinner; set up, serve, and clean up	As much as you can spare, week of December 11, 2009	Hospitality, helping, cooking
Winter Wonders Gift Team	Collect donated gifts, organize gifts, purchase coats, package gifts for families	Many hours during November and first week in December; Winter Wonders-December 11, 2009	Organization, patience, sense of humor, ability to lift packages; caring

Mission/Outreach Ministries (continued)

Ministry	Description of Service	Time Commitment	Gifts/Skills/Interests
Winter Wonders Kids' Gift Shop	Set up donation bin; set up and tend shop where children can select gifts for their loved ones	30 minutes 1-2 times/week Nov. Much time week of Winter Wonders	Helping, interest in children
Winter Wonders Music Program Team	Plan, prepare, provide music for the program on December 11th	Preparation: 1 hour or less on December 11th	Musical gifts
Winter Wonders Reception/Registration Team	Greet and initiate contact with guests on night of program	Planning time: 2-3 hours on December 11th	A heart of hospitality
Winter Wonders Shepherd Team	Act as host/hostess to families as they shop; take them to dinner	Help as much as you are able December 11th	A heart for hospitality; shopping and helping
Winter Wonders Toy Shop Team	Collect, store, organize, move toys to toy room; tend the shop	Planning time; time during Nov.; 4-10 hours/wk. December 11th	Organization, patience, some ability to move large packages

Property Ministries

“There is a time for everything...a time to plant...a time to pluck up...a time to build...a time to mend... it is God’s gift that all should...take pleasure in all their toil.” Ecclesiastes 3

Ministry	Description of Service	Time Commitment	Gifts/Skills/Interests
Memorial Garden Team	Maintain an assigned portion of the PPC Memorial Garden	Approx. 30 minutes per week Mid-March to beginning of Nov.	Gardening, weeding, caring
Rose Garden Care Team	Assist in the upkeep of PPC Rose Garden, planted as memorials to children	Two hours once a month between April and October	Gardening, weeding, caring
Tool Belt Ministry Team	Tasks as assigned to help with upkeep of PPC facilities.	As available; usually 1 day per week.	Willing to help-skills such as carpentry, painting, electric, helper

Support Services Ministries

For as we have many members in one body, but all members do not have the same function...having then gifts differing according to the grace that is given to us, let us use them. Romans 12:4-6

Ministry	Description of Service	Time Commitment	Gifts/Skills/Interests
Attendance Data Entry Team	Enter data from fellowship pads into computer in church office or from home.	2-8 hours/month	Administration, data entry skills
Community Communications Assistance	Assist with posting of PPC events in the community	As needed	Advertising, publicizing
Equipping Ministry Data Entry	Enter information from Equipping Ministry commitment cards into church database in church office or from home	3-4 hours during week of Sept. 20th	Data entry, helping
Equipping Ministry Leadership Team	Help members and attendees discern, celebrate, and invest their gifts in the ministries of PPC	2-3 hours per month	Organization, planning, communication, discernment

Support Services Ministries (continued)

Ministry	Description of Service	Time Commitment	Gifts/Skills/Interests
Information Display Team	Assist with operation of information displays including worship and classroom presentations. Assist with PowerPoint and other AV operations as available	1-2 hour commitment, planned in advance	Affinity for technology; artistic eye and ear; attention to detail; willingness to learn
Office Helper Team	Assist in assorted tasks as needed in the office; prepare mailings, copy file, and answer phones.	3-4 hours/week, scheduled morning or afternoon	Helping
Paoli Press Assembling and Mailing Team	Collate, seal, affix address labels, sort by zip code, band, count and bag Paoli Press newsletters	Usually 1-1 1/2 hours once a month on Thursday morning, as specified by church office	Organization, helping
Photography Team	Using your digital camera, take photos of church ministries and events for web site etc.	As needed	Photography interest and ability
PPC Reporter Team	Report on Ministries and other church events for use in Paoli Press, PPC web site, and general publicity	As needed	Writing, reporting, publishing skills helpful but not required
Prayer Chain Email	Uphold in prayer those in need or sorrow or joy	15 minutes daily	Caring, concern for others

Stewardship/ Finance Ministries

"And God is able to provide you with every blessing in abundance, so that by always having enough of everything, you may share abundantly in every good work." 2 Corinthians 9:8

Ministry	Description of Service	Time Commitment	Gifts/Skills/Interests
Check Co-signers	Under Finance office supervision; In teams of two, review authorization vouchers and backup receipts; sign weekly distribution checks for payment of church obligations	1 hour/week; rotating duties with other co-signers	Accuracy and confidentiality required; familiarity with accounting/bookkeeping practices
Offering Counters	Under Finance office supervision; Count and process Sunday's offering receipts	2 hours, Monday mornings	Helping, serving; accuracy and confidentiality are essential. Training provided for routine mechanical process.

Worship Ministries

"Make a joyful noise to the Lord, all the earth." Psalm 100:1

Ministry	Description of Service	Time Commitment	Gifts/Skills/Interests
Advent Candle Lighters	Light the advent candles in worship During advent	1/2 hour once a year	Public speaking
Blessing of the Animals' Planning Team	Plan and coordinate a worship service celebrating God's gift of animals	3-5 hours over two months prior to animal service	Leadership, organization
Chancel Guild	Prepare the sanctuary at Christmas, Thanksgiving, Easter	2-3 hours at Thanksgiving, Christmas, and Easter	Men and women and ladders; flower arranging skills a plus; will train—no special skills needed
Communion Servers-9:00	Serve communion at 9:00 worship	First Sunday of each month	Ordained Elders and Deacons
Communion Servers 11:00	Serve communion at 11:00 worship	First Sunday of each month	Ordained Elders and Deacons
Lenten Series Planning Team	Plan and coordinate a worship service during Lent	Meet 5 times for 1-1/12 hrs. in the months prior to Lent	Planning, hospitality

Worship Ministries (continued)

Ministry	Description of Service	Time Commitment	Gifts/Skills/ Interests
Multimedia Team	Provide audio, video, lighting, and other technical support for worship services; operate equipment, tech support for music team rehearsals	2-5 hours/week including services	Creativity, technical skills helpful but not necessary; will train
Pew Angels	In coordination of office; Tidy up pew racks, straighten hymnals, replenish information cards, sharpen pencils	1 hour/week on Friday morning	Caring, helping
Prayer Team	Pray for the joys and concerns of the congregation and ministries of the church	Groups meet 30-45 minutes weekly	Healing, caring
Usher Team 9:00 and 11:00 service	Distribute bulletins, and fellowship pads, receive offering, assist in seating, count attendees; help with orderly facilitation of worship	Two months/year, beginning 20 minutes prior to the selected service	Hospitality, serving
Wedding Team	Assist the family with hospitality at the rehearsal and on the day of the wedding	12 hours/year	Hospitality, helping, serving

Worship Ministries (continued)

Ministry	Description of Service	Time Commitment	Gifts/Skills/Interests
Worship Video Team	Video Tape 9,11 am services and special occasions	1 hour, as scheduled	Interest in video recording, focus a camera, will train

Worship and Music Ministries

Praise the Lord! Sing to the Lord a new song and His praise in the congregation of the saints. Psalm 149:1

Ministry	Description of Service	Time Commitment	Gifts/Skills/Interests
Adult Bell Choir	Praise God through songs arranged for brass ensembles; providing preludes, postludes, and accompanying hymns	Rehearse Wednesday nights 8:15pm	Ability to read music; will train
Adult Brass Ensemble	Praise God through songs arranged for brass ensembles; providing preludes, postludes, and accompanying hymns	Rehearse Thursday nights 6:15pm Music Rm.	Ability to play brass instrument

Worship and Music Ministries (continued)

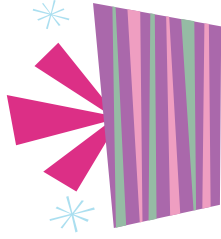
Ministry	Description of Service	Time Commitment	Gifts/Skills/Interests
Cherub Choir	Singing, marching, coloring, and praising God for preschoolers, Kindergarten and First Grade	Rehearse on Sundays from 10:45-11:05am in Rm. 1; Christmas Musical, Winter Wonders Programs, Ash Wednesday Family Service, Palm Sunday Parade, and various Sunday services	Joy in worshipping; singing and music
Children's Choir	Singing, marching, coloring, and praising God for Grades 2-5th	Rehearse on Sundays from 11:15-12:00 pm in Rm. 1; Christmas Musical, Winter Wonders Programs, Ash Wednesday Family Service, Palm Sunday Parade, and various Sunday services	Joy in worshipping; singing and music
Children's Musical Pageant	Musical Pageant at Christmas time	Rehearsals as scheduled Oct., Nov., & Dec.	Children, musical talent: Adults- costumes and props
Praise Team	Lead music for 9:00 worship service	Rehearse Wednesday 7:00pm in the Sanctuary; 9:00 Sunday worship	Play musical instruments, sing, worship God through music

Worship and Music Ministries (continued)

Ministry	Description of Service	Time Commitment	Gifts/Skills/Interests
Sanctuary Choir	Lead music at 11:00; occasional special services	Rehearsal on Thursday 7:00pm	Singing, love of music; no audition required
Spring All Church Musical	Presentation of Joseph and the Amazing Technicolor Dreamcoat	Rehearsals as scheduled	Flexible adults willing to sing, speak, work on costumes & props, shepherd children's choir

Miscellaneous Ministries

Ministry	Description of Service	Time Commitment	Gifts/Skills/Interests
Heritage Center	Gather, organize, arrange, label items of historical interest for PPC	2-3 hours/week in the summer	Interest in history; enjoyment of detailed work
Wherever the Church Needs Me	Helping on an as-needed basis	As needed	Your spiritual gifts



God created you for a purpose....(Ephesians 4:11-13)

**...and equipped you with the gifts to fulfill your calling.
(1 Peter 4:10)**

**He gave you those gifts to be used in community to serve
God and others. (Romans 12:4-8)**



Spiritual Gifts

Administration: visionary understanding and goal setting for effective ministry

Apostleship: starting new ministries and/or churches

Discernment: recognizing what is of God and what is not of God

Encouragement: being present to inspire, strengthen, and affirm others

Evangelism: sharing the gospel with others in ways that encourage them to become Jesus' disciples

Faith: trusting God and acting on God's promises regardless of the circumstances

Giving: liberally and cheerfully giving material resources to God's work

Healing: faithfully praying for people who need physical, emotional, or spiritual healing

Helping/serving: giving cheerful, practical assistance

Hospitality: creating an environment where others feel welcome and at ease

Knowledge: understanding information and using God-given insight to promote the growth and well-being of the church

Leadership: clarifying and communicating the vision of a group ministry in a way that attracts others to get involved

Mercy: offering practical, compassionate love and comfort to those who suffer

Preaching/Prophecy: proclaiming God's word so others are encouraged, challenged, consoled, and convinced

Shepherding: guiding and nurturing others in their spiritual growth

Teaching: helping people to learn and apply scripture

Wisdom: understanding and applying God's truth in complex circumstances



Paoli Presbyterian Church
225 South Valley Road
Paoli, PA 19301

610-644-8250
www.paolipres.org

